



**BRIZA**  
CONCEPT DESIGN

**breezewayhouse**

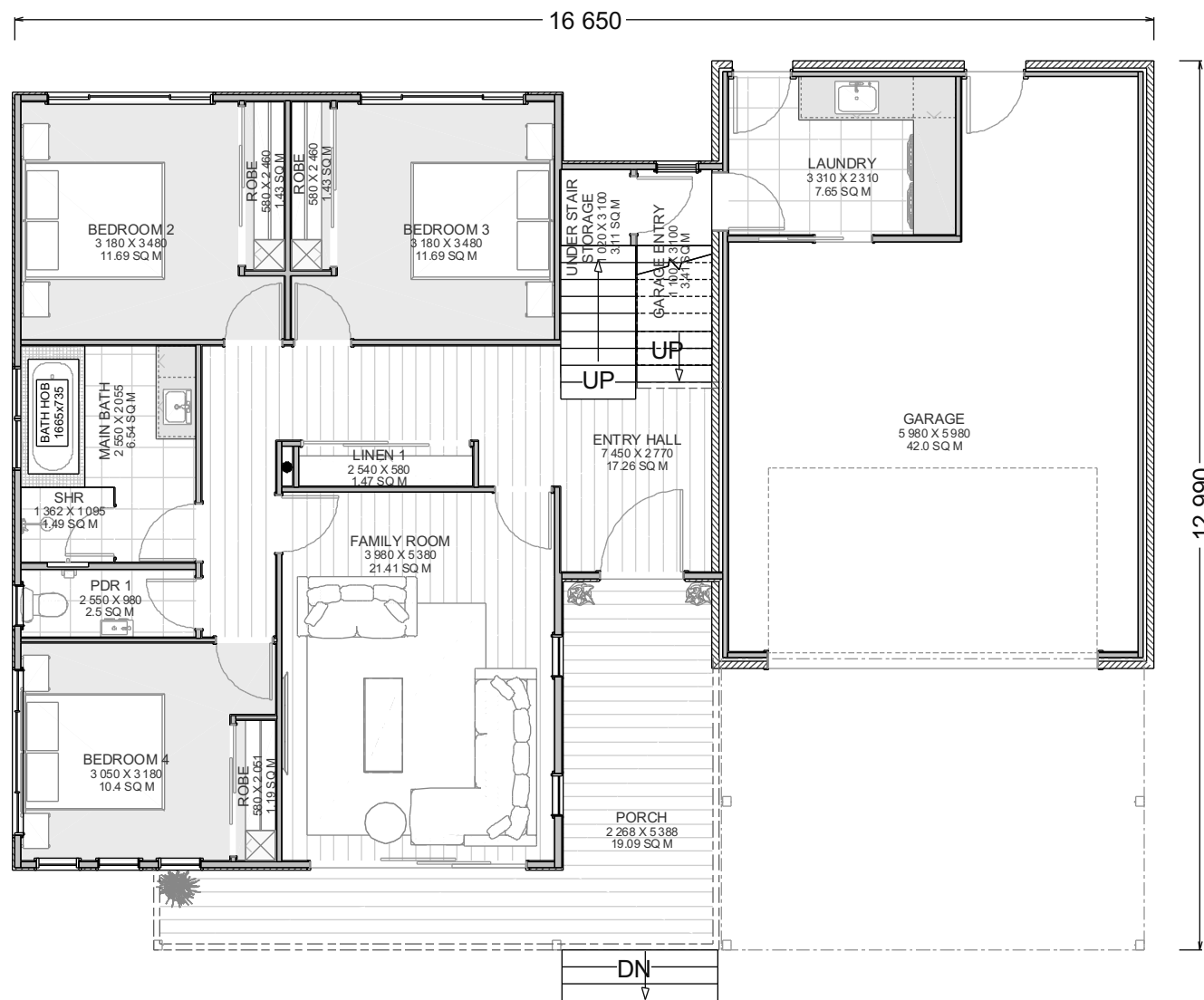
QBCC 1200276  
Unit 12b 661 Oxley Rd, Corinda, 4075  
Phone (07) 3310 4578  
Email [info@breezewayhouse.com.au](mailto:info@breezewayhouse.com.au)  
[www.breezewayhouse.com.au](http://www.breezewayhouse.com.au)

FURNITURE ARE FOR ILLUSTRATION PURPOSES ONLY

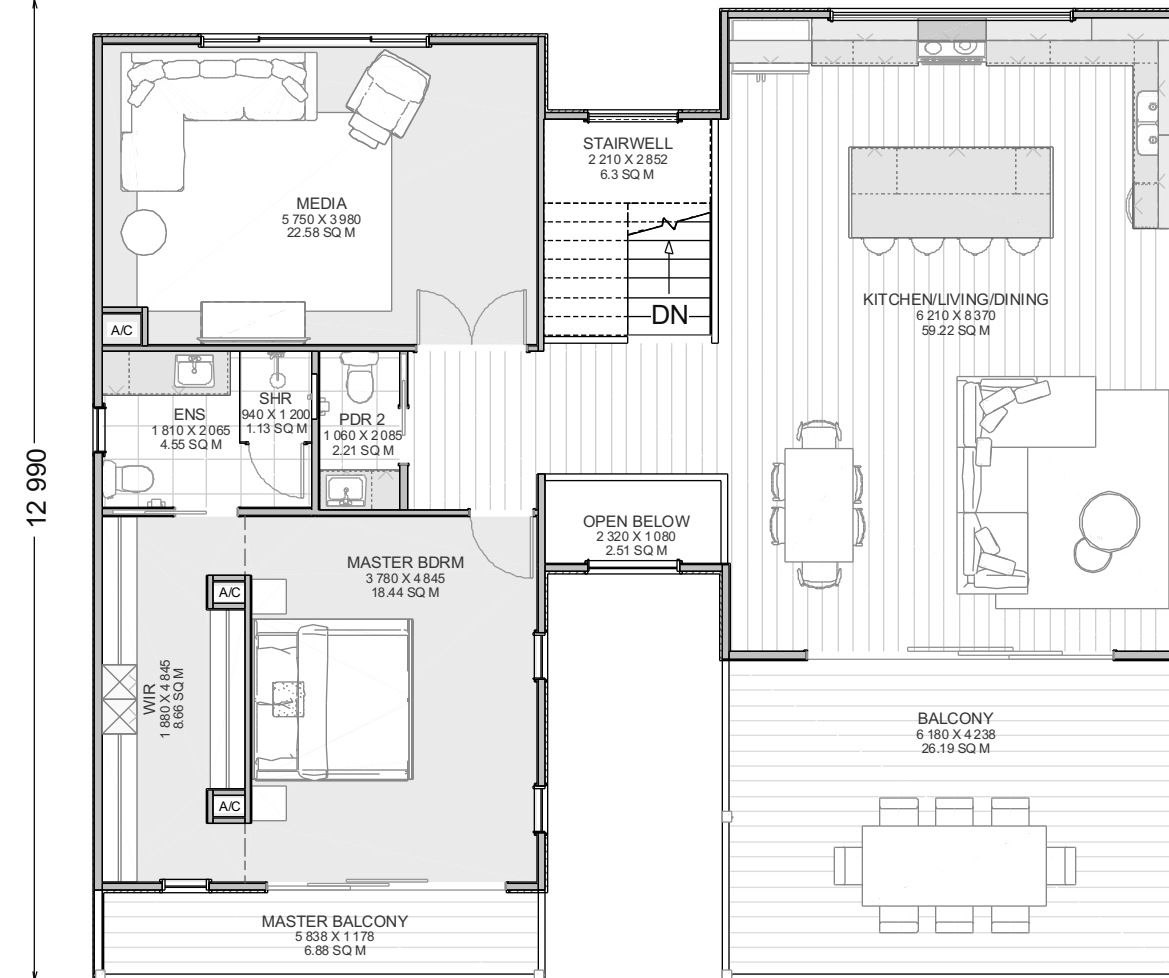
1:100 @ A3

# FLOOR PLANS

3 4 3



GROUND FLOOR PLAN



FIRST FLOOR PLAN

FLOOR AREA:			
LIVING			
	FIRST FLOOR		125.7
	GROUND FLOOR		119.5
GARAGE			42.0
PORCH			19.1
FRONT BALCONY			26.2
MASTER BALCONY			6.9
VOIDS			2.5
	VOIDS	DECKS	HOUSE
TOTAL AREA	2.5	52.2	287.2
			341.9

## HOUSE DIMENSIONS

WIDTH	16.65m
LENGTH	12.99m

FURNITURE ARE FOR ILLUSTRATION PURPOSES ONLY

1:100 @ A3

**breezewayhouse**

QBCC 1200276  
 Unit 12b 661 Oxley Rd, Corinda, 4075  
 Phone (07) 3310 4578  
 Email info@breezewayhouse.com.au  
 www.breezewayhouse.com.au

# ELEVATIONS & 3D VIEWS



FURNITURE ARE FOR ILLUSTRATION PURPOSES ONLY

1:100 @ A3

**breezewayhouse**

QBCC 1200276  
Unit 12b 661 Oxley Rd, Corinda, 4075  
Phone (07) 3310 4578  
Email [info@breezewayhouse.com.au](mailto:info@breezewayhouse.com.au)  
[www.breezewayhouse.com.au](http://www.breezewayhouse.com.au)