



COHO
CONCEPT DESIGN

breezewayhouse

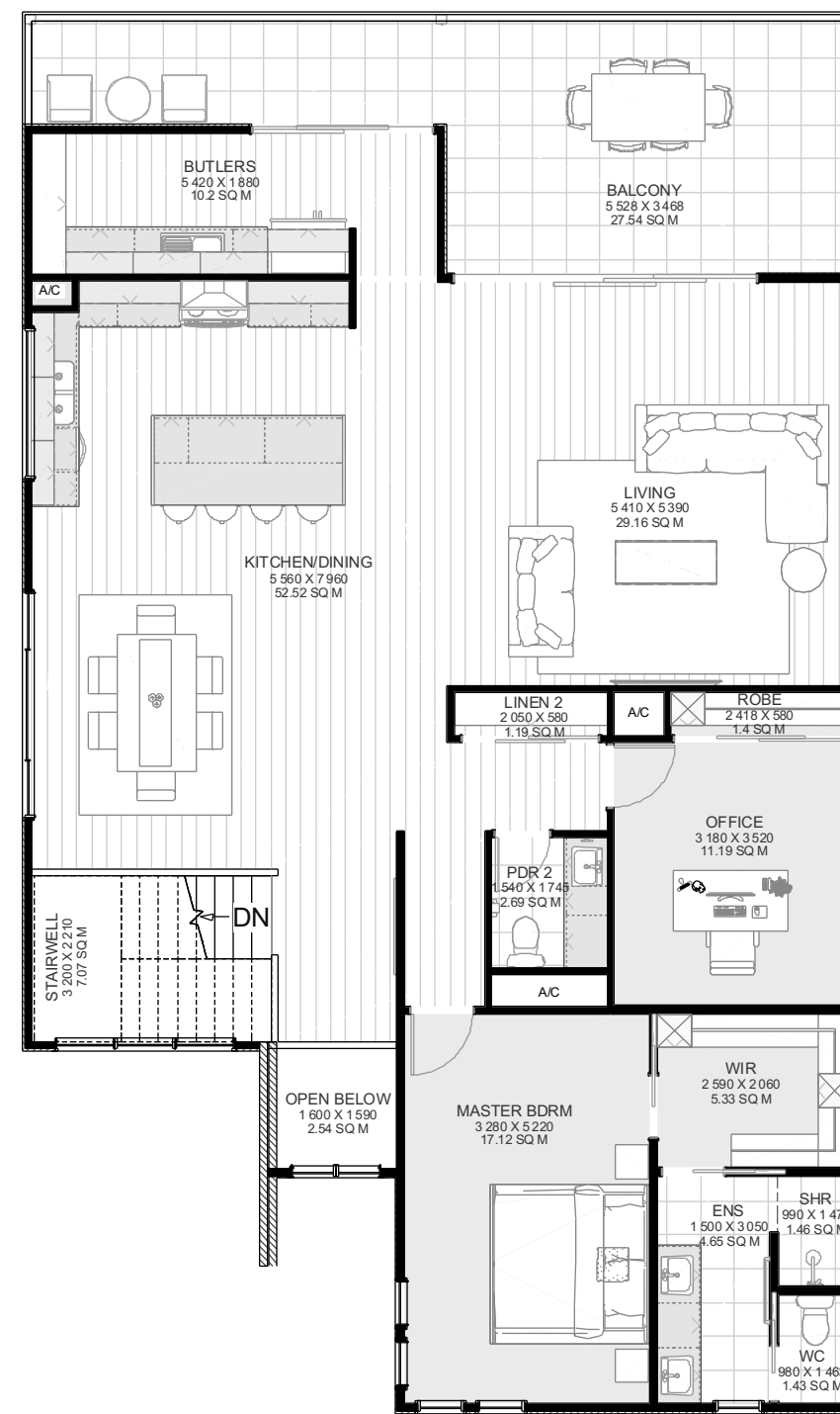
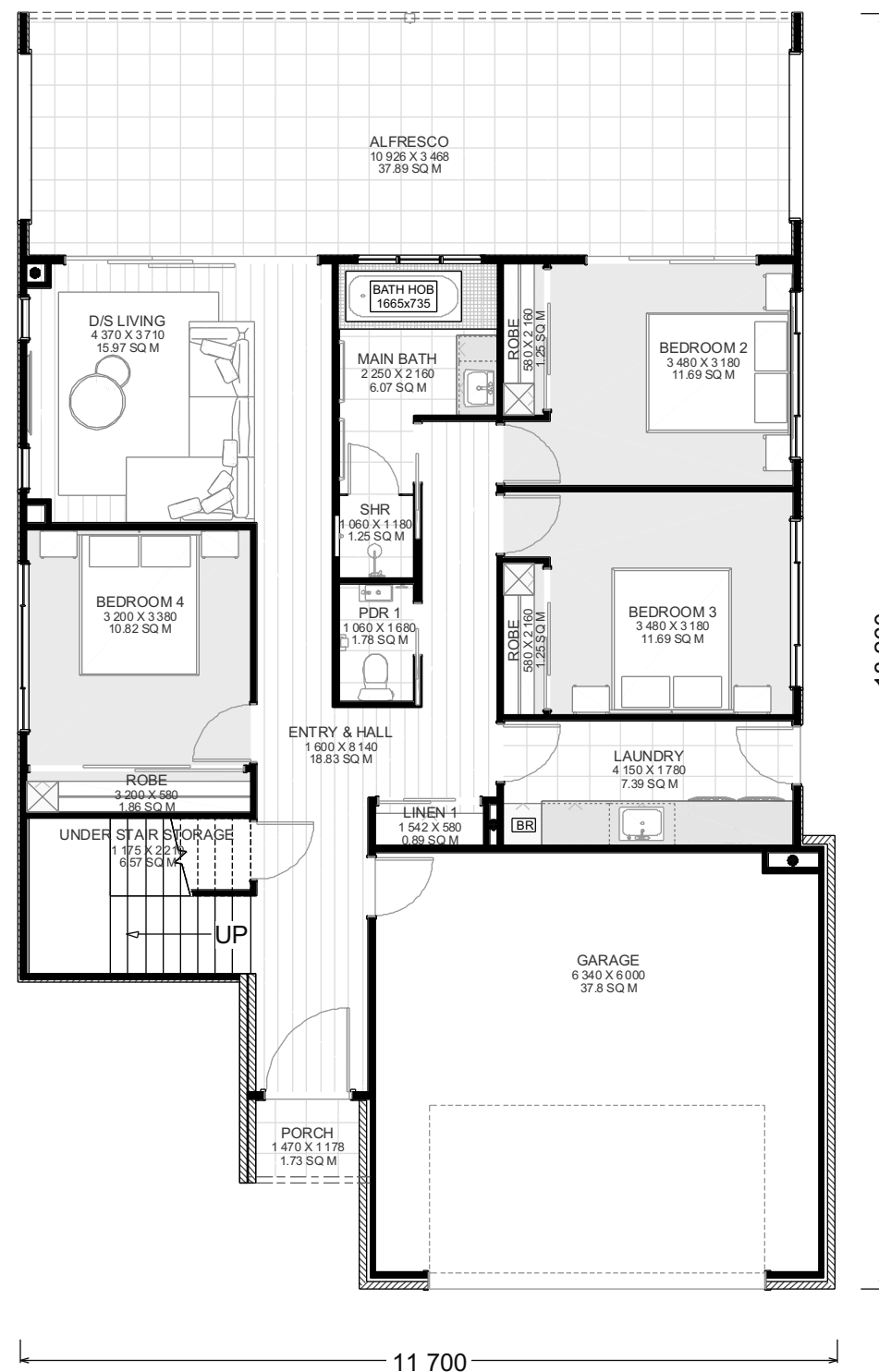
QBCC 1200276
Unit 12b 661 Oxley Rd, Corinda, 4075
Phone (07) 3310 4578
Email info@breezewayhouse.com.au
www.breezewayhouse.com.au

FURNITURE ARE FOR ILLUSTRATION PURPOSES ONLY

1:100 @ A3

FLOOR PLANS

2  4  2 1/2 



FLOOR AREA:			
LIVING			
	FIRST FLOOR		150.3
	GROUND FLOOR		114.2
GARAGE			37.8
ALFRES CO		37.9	
REAR BALCONY		27.5	
PORCH		1.7	
VOID			2.5
		DECKS	HOUSE
TOTAL AREA	67.16		304.85
			372.01

HOUSE DIMENSIONS

WIDTH	11.7m
LENGTH	18.26m

GROUND FLOOR PLAN

FIRST FLOOR PLAN

breezewayhouse

QBCC 1200276
 Unit 12b 661 Oxley Rd, Corinda, 4075
 Phone (07) 3310 4578
 Email info@breezewayhouse.com.au
 www.breezewayhouse.com.au

ELEVATIONS



FURNITURE ARE FOR ILLUSTRATION PURPOSES ONLY

1:100 @ A3

breezewayhouse

QBCC 1200276
Unit 12b 661 Oxley Rd, Corinda, 4075
Phone (07) 3310 4578
Email info@breezewayhouse.com.au
www.breezewayhouse.com.au